



vImpact-61

- **Automatic Modal Hammer**
- **Adjustable Force Amplitude**
- **Adjustable Impact Rate**
- **Timer Operation**
- **External Trigger TTL, Closer Contact**
- **Excitation Force > 150 N peak**
- **Frequency Range up to 60kHz**
- **High Impact Reproducibility**

Automatic Modal Hammer

for high frequencies

A manual excitation with a small Modal hammer without a „Double Hit“ is nearly impossible.

The new **vImpact-61** works without “Double Hits” in all directions up to 150 N peak.



The new **vImpact-61** enables you to excite the structure with precision, very good reproducibility and simultaneous force measurement. The frequency ranges up to 60 kHz makes the small modal hammer very interesting for acoustic or laser measurements.

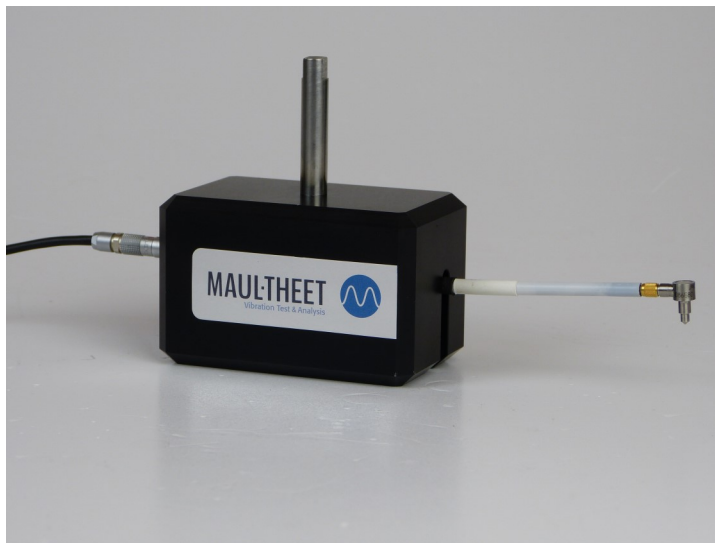
The **vImpact-61** system consists of three components:

- Hammer head
- Control unit
- Power Supply



The **vImpact-61** modal hammer can be triggered in various ways:

- With the internal timer in the range of 2 hits per second up to 1 hit per 1000 seconds.
- Manually with the trigger button at the control unit.
- By closing the external input with a switch through an extension wire or by any device with a closing contact.
- By TTL signal.



Technical Specifications:

Impact Force	Adjustable
Max. Force	> 150 N
Frequency Range	Up to 60kHz, depending on object
Coupling	2-4 mA, IEPE
Trigger	Timer Button External contact (Closer) TTL-Signal 40....200ms
Power supply	24V DC
Mass	Head: 0.412 kg, Controller: 0.6 kg
Dimensions Head	180 x 50 x 50 mm

Information:

For further information please contact us.

MAUL-THEET GmbH
Bülowstrasse 66
D-10783 Berlin
tel: 0049 (0) 30 8620 7775
fax: 0049 (0) 30 8620 7568
info@maul-theet.com